



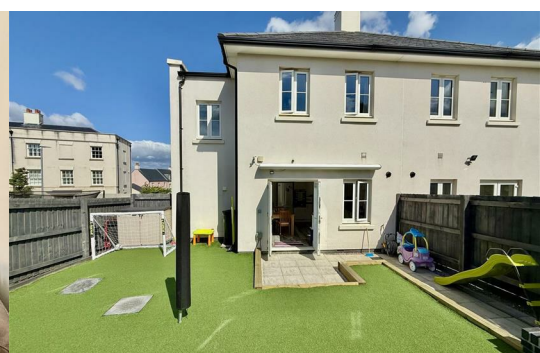
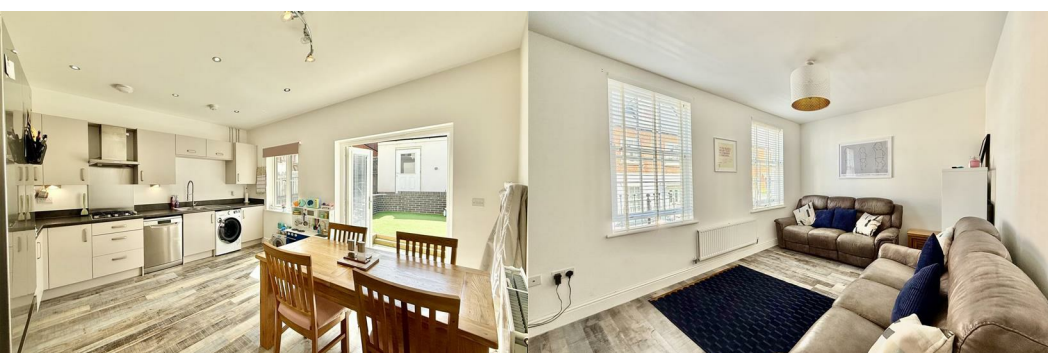
24 Dorado Street

Sherford, Plymouth, PL9 8FX

£310,000



A nicely presented semi-detached family house enjoying a landscaped southerly facing garden with garage & parking. The downstairs accommodation briefly comprises an entrance hall, wc, kitchen/dining room opens to the garden & separate lounge. At first floor level a landing provides access to 3 bedrooms, the master with en-suite shower room & family bathroom. uPVC double-glazing & gas central heating.



DORADO STREET, SHERFORD, PLYMOUTH, PL9 8FX

ACCOMMODATION

Front door opening to the entrance hall.

ENTRANCE HALL 11'1 x 7'5 (3.38m x 2.26m)

Feature high ceilings. Staircase ascends to the first floor. Fitted flooring which continues throughout the ground floor. Cupboard housing the electric meter & consumer unit.

LOUNGE 13'10 x 10'9 (4.22m x 3.28m)

2 sash windows to the front elevation with fitted blinds. Recess for TV with glass-fronted flame-effect inset electric fire. Feature high ceilings.

KITCHEN/DINING ROOM 14'2 x 13'5 (4.32m x 4.09m)

A generous room to the rear with ample space for dining table & chairs. Spotlighting. Window to the rear. French doors with fitted blinds opening to the landscaped garden. A range of base & wall-mounted cabinets with matching fascias, work surfaces & splash-backs. Over-mounted stainless steel one-&a-half bowl single-drainer sink unit with a mixer tap. Spaces for a washing machine, dishwasher & American fridge/freezer. Built-in double oven & grill. Separate inset 4-burner gas hob with stainless-steel splash-back & cooker hood above. Wall mounted Ideal gas boiler concealed by a matching cabinet.

DOWNSTAIRS WC 4'8 x3'5 (1.42m x1.04m)

Fitted with a wc & pedestal wash handbasin with a tiled splash-back.

FIRST FLOOR LANDING

Providing access to the first floor accommodation. Window to the rear over the staircase. Doors providing access to the first floor accommodation. Loft hatch. Over-stairs cupboard with shelving, currently housing the tumble-dryer.

BEDROOM ONE 14'2 x 8'10 (4.32m x 2.69m)

2 sash windows to the front elevation. Doorway opening to the ensuite shower room.

ENSUITE SHOWER ROOM

Double-sized tiled shower with electric shower system and glass door, pedestal wash hand basin with tiled splash-back and wc. Wall-mounted towel rail/radiator.

BEDROOM TWO 14'2 x 8'2 (4.32m x 2.49m)

2 windows to the rear elevation.

BEDROOM THREE 8'6 x 7'5 (2.59m x 2.26m)

Sash window to the front elevation with views.

FAMILY BATHROOM

Comprising bath with shower system over and glass screen, pedestal wash handbasin with tiled splash-back and wc. Tiled walls around bath. Wall-mounted chrome towel rail/radiator.

GARAGE 20' x 9'10 (6.10m x 3.00m)

Up-&-over door to the front. Rear access door. Pitched roof providing overhead storage. Power and lighting. Parking space in front of the garage.

GARDEN

To the rear the gardens enjoy a southerly aspect and are landscaped for ease of maintenance, mainly laid to artificial grass together with paving & decking. Outside power points. Outside tap. Wall-mounted electronic awning.

COUNCIL TAX

South Hams
Council Tax Band: C

SERVICES PLYMOUTH

The property is connected to all the mains services: gas, electricity, water and drainage.

AGENT'S NOTE

There is an annual service charge of £206 for the maintenance of the communal areas.

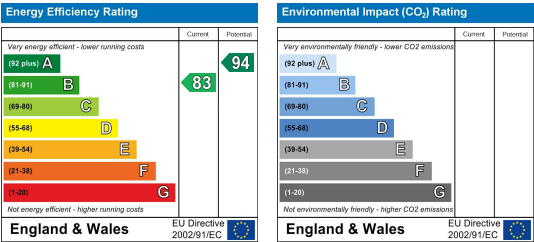
Area Map



Floor Plans



Energy Efficiency Graph



These particulars, whilst believed to be accurate are set out as a general outline only for guidance and do not constitute any part of an offer or contract. Intending purchasers should not rely on them as statements of representation of fact, but must satisfy themselves by inspection or otherwise as to their accuracy. No person in this firms employment has the authority to make or give any representation or warranty in respect of the property.